

If you choose cost performance, it's V600!



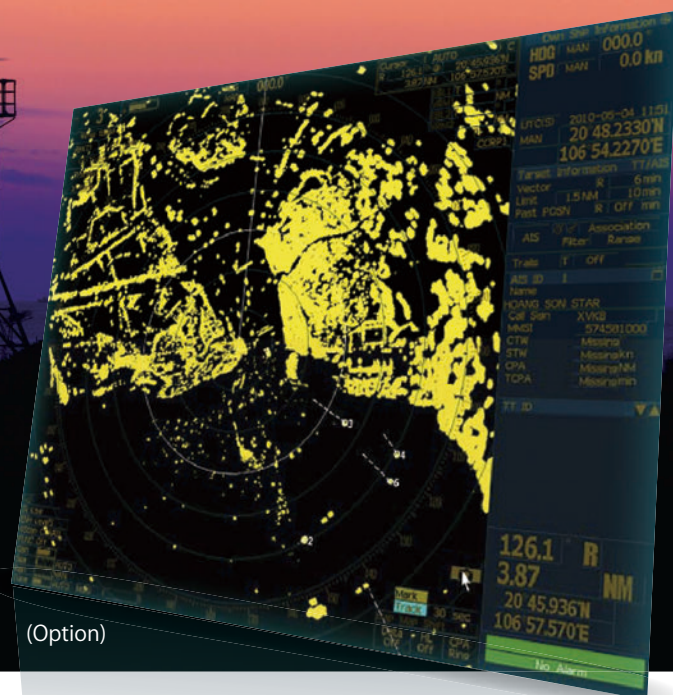
9-foot X-band 25kW antenna



Processor Unit



Operation Unit



(Option)

Complied with
IALA V-128
Local Port Services

TRIHAWK V Series - Entry Model

■ Designed for IALA V-128 Local Port Services

The V600 series is an entry model which is available at the lowest cost in the JRC TRIHAWK V series and designed to meet the IALA V-128 Local Port Services.

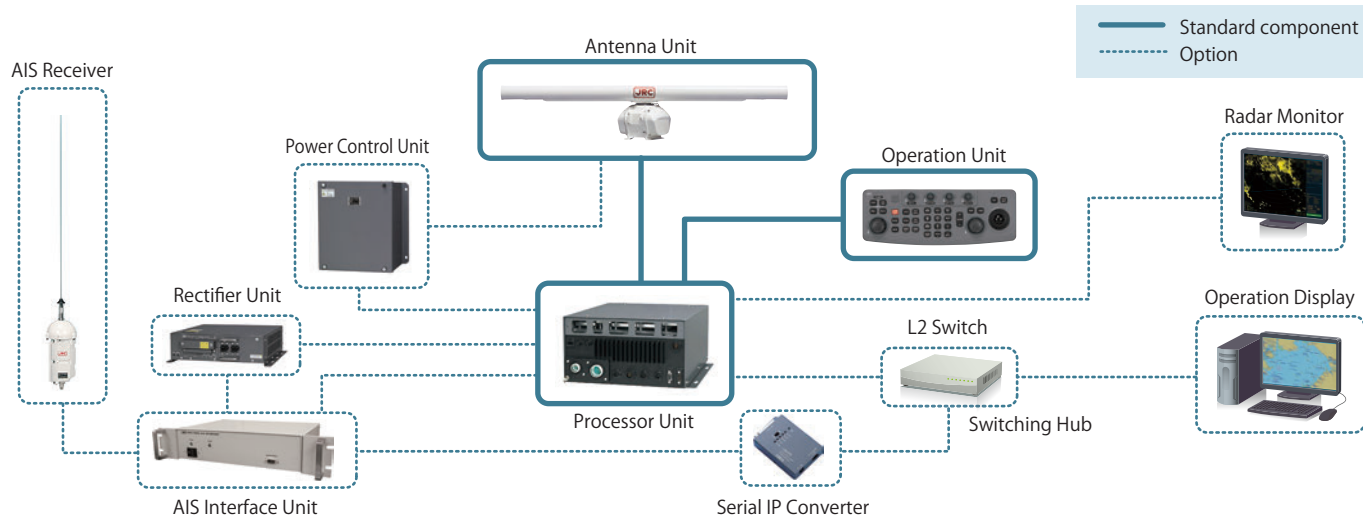
■ Compact-type VTS

This VTS model is designed as the compact system consisting of an antenna, a processor unit and an operation unit, which is suitable for surveillance of a relatively small sea area of approximately 10 to 15NM. An operation display is also available as option to display an accurate electronic navigational chart (ENC S63).



ENC display screen of optional operational display

V600 Series System Configuration



Standard Components

6-foot X-band 10kW antenna	Processor Unit
or	
9-foot X-band 25kW antenna	Operation Unit

Options

AIS Receiver System					

V600 Series Specifications

Model Type	JPL-600-2ER1-6	JPL-600-2ER2-9	JPL-600-2ER2-9J
Display system	Raster-scan color PPI		
Display range scales	0.25/0.5/1.5/3/6/12/24/48 NM		
Antenna Unit	NKE-600-2F2T	NKE-600-2D1T	NKE-600-2D1TJ
Radiator length	6 feet	9 feet	9 feet
Transmitted power	10kW	25kW	25kW
Rotational speed	27rpm	24rpm	24rpm
Transmitting frequency	9410MHz band	9410MHz band	9740MHz band
Dimensions/Weight	1910 x 457mm/40kg	2825 x 536mm/60kg	2825 x 536mm/60kg
Processor Unit	NDC-1376A		
Dimensions/Weight	340(W) x 170(D) x 305(H)mm/6kg		
Operation Unit	NCE-5085A		
Dimensions/Weight	360(W) x 132(D) x 59(H)mm/1.3kg		
Options			
Performance Monitor	NJU-82A (for 9410MHz-band only)		
Radar Monitor	NWZ-203		
Rectifier Unit	MBZ-5070A		
ARPA Processor Unit	NCA-891: Capable of tracking up to 100 targets		
AIS Receiver System	NZA-270: Capable of processing up to 300 AIS vessels		
Operation Display	NZA-272: Capable of supporting ENC S63 (sold separately)		
Power Control unit	NZA-280: Capable of extending the Antenna-Processor distance up to 400m		

※IALA Local Port Services category is under planning by IALA and will be decided by V-128,Ed.4.

• Specifications may be subject to change without notice.

For further information, contact:

JRC Japan Radio Co., Ltd.
 Since 1915 URL <http://www.jrc.co.jp/eng/>

Main Office: 1-1, Shimorenjaku 5-chome, Mitaka-shi, Tokyo 181-8510, Japan
 Telephone: +81-422-45-9890
 Facsimile: +81-422-45-9683
 E-mail: ovs-contact@jrc.co.jp

Overseas Branches : Seattle, Amsterdam, Athens, Manila
Liaison Offices : Taipei, Jakarta, Singapore, Hanoi, Hamburg, New York